



MOUNTING INSTRUCTIONS

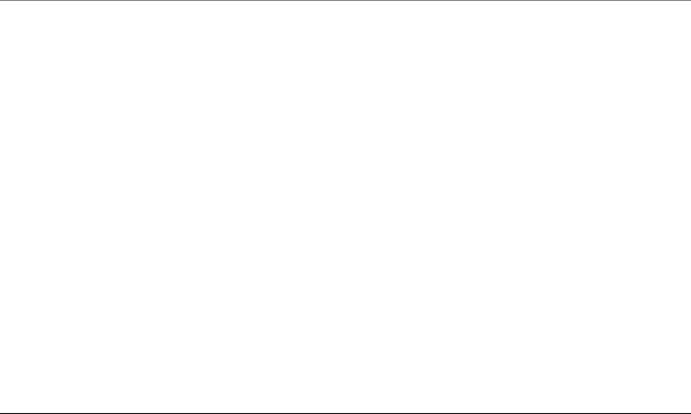
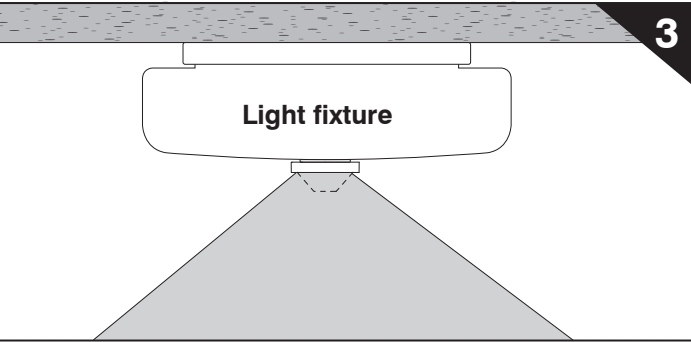
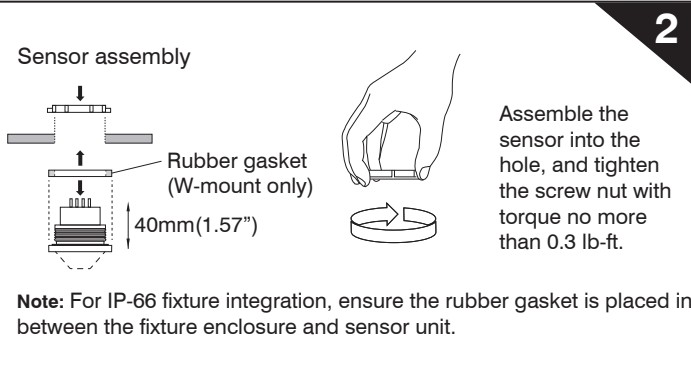
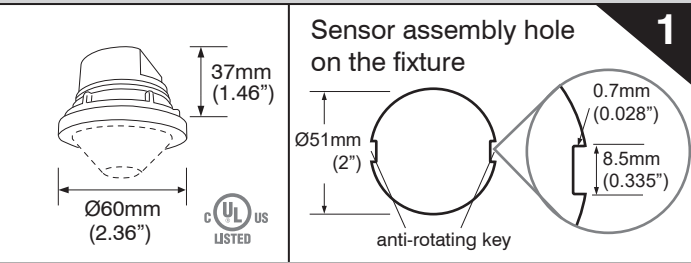
OS-NET sensor is available with multiple mounting options with or without a mounting bracket. These mounting options allow the sensor to be integrated with lighting fixture or mounted on the ceiling in various ways.

Ceiling Surface	S-mount with SMB-500
	<p>Assemble the sensor unit with front cover and tighten the screw nut with torque no higher than 0.3 lb-ft.</p>

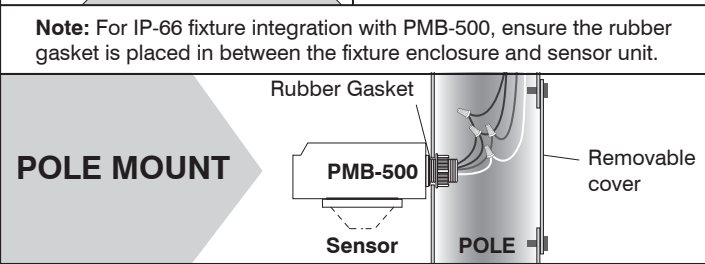
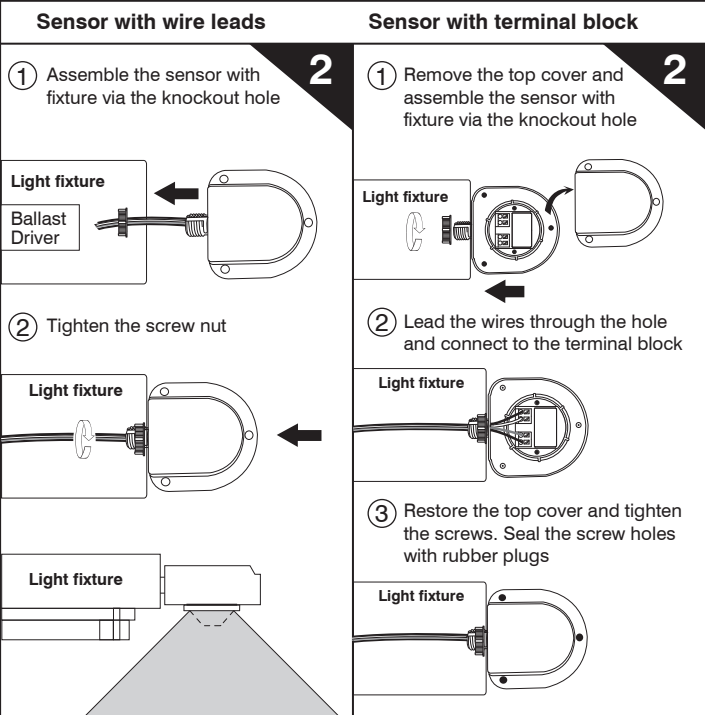
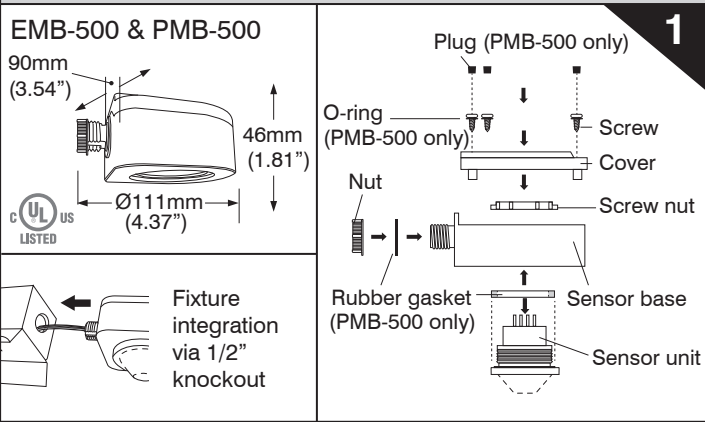
Junction Box	C-mount with CMB-500

Ceiling Recess	R-mount with RMB-500	L-mount with LMB-500
<p>For LMB-500, direct cable through the cable holder of back cover, connect wire to sensor and secure with screw.</p> <p>NOTE: For the sensor with wires, cut and strip the wires as below;</p> <p>Wire length: 30-50mm Strip length: 8-11mm</p>		

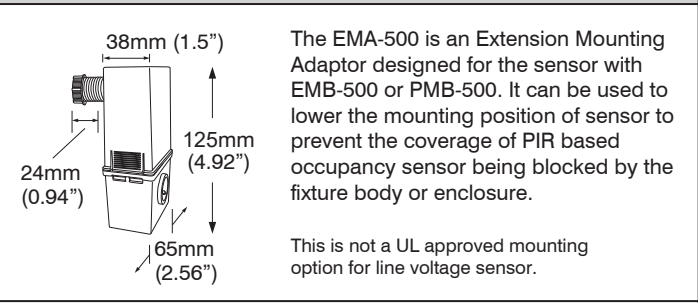
Fixture Integrated **F-mount**
IP-66 Fixture Integrated **W-mount**



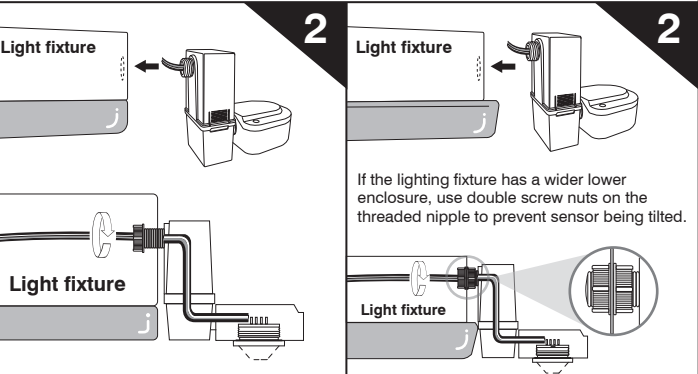
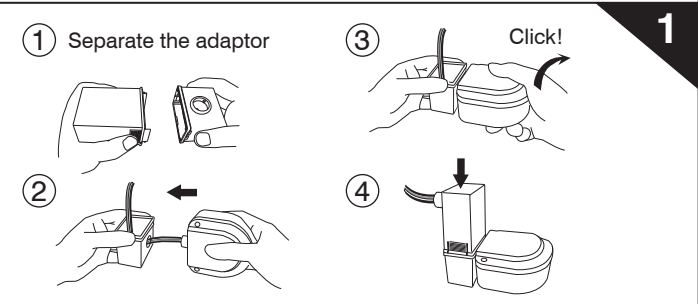
Fixture External **E-mount with EMB-500**
IP-66 Fixture External **P-mount with PMB-500**



ACCESSORIES
Extension Mounting Adaptor **EMA-500**



Assemble with EMB-500



Extension Joint **EJ-30 / EJ-50 / EL-40**

